



Flow Cytometry Facility

Services Update

Our Mission:

- State-of-the-art instrumentation
- Training
- Expertise and Development

Scientific Director



Anne Sperling, PhD.
Associate Professor
Section of Pulm/Critical Care
asperlin@medicine.bsd.uchicago.edu

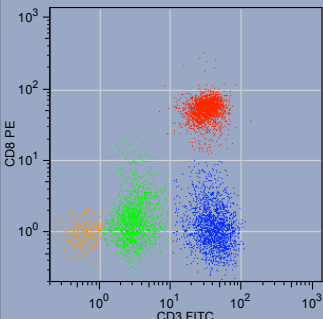
Technical Director



Ryan Duggan
rduggan@flowcity.bsd.uchicago.edu
Office: 702-5582
Lab: 702-9212

Main Facility:

Kovler Laboratories
910 E. 58th St. Rm 037
Ph: 702-9212



Introduction:

The Flow Cytometry Facility provides state-of-the-art instrumentation, services, education and consultation for University of Chicago investigators across many disciplines within the Biological and Physical Sciences Divisions.

Outlined in this document is a list of services, fees and policies employed by the facility. Please note that this is meant only as a guide and is not exhaustive of all facility policies. Please consult the facility director for additional information

Cell Sorting:

- The facility provides cell-sorting services Monday, Wednesday, and Friday from 9am to 5pm, and Tuesday, and Thursday from 9am to 8pm.
- Sort scheduling is done by contacting the facility directly
- In order to allocate an appropriate amount of time for your sort, please have ready the following information regarding your sort
 - Number of cells/samples and cell type
 - Fluorochromes or dyes being used
 - Type of collection receptacle (tube, plate, dish, etc...)
 - Whether or not the sort needs to remain sterile.
- 9 fluorescence parameters can be used to define up to 4 populations to be sorted simultaneously at throughput rates of up to 30,000 cells/second.

Fees

- There is a flat setup fee for each sort as well as an hourly rate billed to the nearest half hour.
- You will be charged for the greater of the time scheduled or time used

	UofC Investigators	UCCRC members	Non-UofC Investigators
Setup Fee	\$25	\$25	\$38
Hourly Rate	\$75	\$50	\$115

Policies

- If you do not have the proper controls for your sort, no guarantee is made regarding the outcome of the sort
- Sort start times and end times will be strictly enforced barring any instrument malfunction.
- If you cancel less than 24 hours in advance, you will be charged for 50% of the time you reserved.
- We are equipped to sort at the BSL-2 level or lower.

Bench-top Analyzer Usage:

- The facility has a wide range of instrumentation that can be placed in one of the following 4 categories
 - Routine Analysis (FACSCanto or FACScan)
 - High Throughput Analysis (FACSCalibur HTS)
 - High-end Analyzers (LSRII or Cyan)
 - Luminex Bead Analyzer (BioPlex)
- There is separate training for each of the 4 above categories. Training is done at the instrument with samples you have prepared.
- Once trained, you will have 24/7 access to the instrument

Fees

- There is a log-in program on each instrument that will track the amount of time in minutes that you spend on the instrument.
- Each individual will receive a username and password to access the instrument (Except for the FACSCalibur HTS).

	UofC Investigators	UCCRC members	Non-UofC Investigators
Hourly Rate	\$24	\$14	\$36
BioPlex Rate	\$15	\$10	\$25

Policies

- Scheduling is done on the online instrument scheduler. Please refer to the facility web site for a direct link to the scheduler
- You may reserve up to 2 hours of time. If you need more than two hours, you must receive permission from the facility director.
- You must attend the Flow Basics seminar AND receive instrument specific training from facility personnel in order to receive access to the instrument.
- Your username is linked to a PI. If you change labs, let us know.

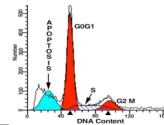
Assisted Bench-top Analyzer Usage:

- The facility can assist you either by running your samples for you on the instrument (*Drop-off service*), or assist you in setting up the instrument settings for your experiment (*Instrument Settings Help*)
- The Instrument Settings Help service consists of a **dedicated 30-minute time slot** during which the facility technician will assist you in setting up the instrument and making sure every looks good.

Fees

- The drop-off service fee includes instrument usage time
- The Instrument settings help fee is in addition to instrument usage fees

	UofC Investigators	UCCRC members	Non-UofC Investigators
Drop-Off hourly rate	\$55	\$34	\$80
Instrument Settings Help flat fee	\$15	\$10	\$25
BioPlex Drop-off rate	\$40	\$26	\$60



Available Bench-top Instruments:

Kovler Main Facility

BD FACScan
BD LSRII
Dako Cyan-ADP
BioRad BioPlex

Hospital Satellite Facility Rm. S319

BD FACSCalibur-HTS
BD FACSCanto

BSLC Satellite Facility Rm. R111

BD FACSCanto

BSLC Satellite Facility Rm. R409

BD FACSCanto

High Speed Cell Sorters:

Kovler Main Facility

BD FACSAria
Dako MoFlo-HTS



Flow Cytometry Basic Training:

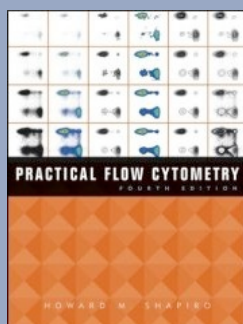
This course explores the theory behind flow cytometry as well as how the instrumentation works. It is an in-depth look at the components and workings of a flow cytometer.

Flow Cytometry Basic Training

A Look Inside the Box

FLA

Ryan Duggan
Technical Director
Flow Cytometry Facility
University of Chicago



References available in the Facility:

- *Current Protocols in Cytometry*
- Shapiro's "Practical Flow Cytometry"
- Application notes and cutting-edge references available from our Reference board outside the main lab.
- The *Cytometry* journal

Policies

- These services will not be performed without all the proper controls.
- Prior to the Drop-off service being performed, a meeting will be setup to make sure both parties understand the experiment fully.
- You do not need to attend any training to take advantage of the Drop-off service
- Drop-off service includes preliminary analysis of data.
- Other, non-scheduled, assistance is still available and free of charge, but please note that facility technicians may not always be able to help you, as they are typically very busy. The key phrase for this service is "dedicated 30 minute time slot."

Training:

- Flow Basic training, a 2-hour theoretical lecture, is offered on the first Monday of every odd numbered month (January, March, May, July, etc.)
- Specific instrument training is offered on an as-needed basis, and is done one-on-one using samples you have prepared.
- Data analysis training is offered on an as-needed basis, and can be done for larger groups (labs) or one-on-one.
- Other seminars and specific training sessions are open to everyone, and will be scheduled as appropriate

Fees

- Training is provided free of charge for flow facility users

	Flow Facility User	All Others
Flow Basics	No Charge	\$100
Instrument Training	No Charge	\$50
Data Analysis	No Charge	\$50
Specific Applications	No Charge	\$100
Seminars	No Charge	No Charge

Consultation:

- The Facility is committed to educating and assisting in the development of cutting-edge applications.
- We are available to meet with you to discuss your project, and recommend protocols or troubleshoot problems.
- We can also look at your data for help interpreting results.
- To schedule an appointment, please contact the facility directly.

Fees

- Consultation is provided free-of-charge to all users of the facility.
- Outside users may be subject to a fee.